

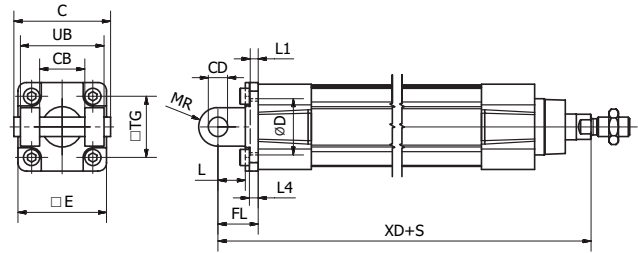
Clevis Bracket - MP2



Intended for flexible mounting of cylinder.
Can be combined with clevis bracket MP4 and pivot bracket with rigid bearing AB7.

Materials:

Clevis bracket: Aluminium (no surface treatment)
Pin: Surface hardened steel
Locking pin: Spring steel
Circlips according to DIN 471: Spring steel
Mounting screws acc. to DIN 912: Zinc-plated steel 8.8



Supplied complete with mounting screws for attachment to the cylinder.

According to ISO 15552

| Cyl.-bore | C | E | UB | CB | TG | FL | L1 | L | L4 | D | CD | MR | XD* | Weight | Order code |
|-----------|------|------|------|------|------|------|------|------|------|------|------|------|------|--------|------------------|
| [mm] | [mm] | [mm] | [mm] | [mm] | [mm] | [mm] | [mm] | [mm] | [mm] | [mm] | [mm] | [mm] | [mm] | [kg] | |
| Ø32 | 53 | 45 | 45 | 26 | 32.5 | 22 | 5 | 13 | 5.5 | 30 | 10 | 10 | 142 | 0.08 | P1C-4KMTB |
| Ø40 | 60 | 52 | 52 | 28 | 38 | 25 | 5 | 16 | 5.5 | 35 | 12 | 12 | 160 | 0.10 | P1C-4LMTB |
| Ø50 | 68 | 65 | 60 | 32 | 46.5 | 27 | 5 | 16 | 6.5 | 40 | 12 | 12 | 170 | 0.18 | P1C-4MMTB |
| Ø63 | 78 | 75 | 70 | 40 | 56.5 | 32 | 5 | 21 | 6.5 | 45 | 16 | 16 | 190 | 0.24 | P1C-4NMTB |
| Ø80 | 98 | 95 | 90 | 50 | 72 | 36 | 5 | 22 | 10 | 45 | 16 | 16 | 210 | 0.49 | P1C-4PMTB |
| Ø100 | 118 | 115 | 110 | 60 | 89 | 41 | 5 | 27 | 10 | 55 | 20 | 20 | 230 | 0.73 | P1C-4QMTB |
| Ø125 | 139 | 140 | 130 | 70 | 110 | 50 | 7 | 30 | 10 | 60 | 25 | 25 | 275 | 1.37 | P1C-4RMTB |

*Does not apply to cylinders with piston rod extension, lock units and Twin Rods, see page 38.

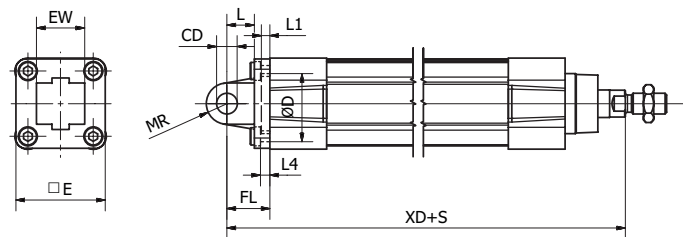
Clevis Bracket - MP4



Intended for flexible mounting of cylinder. Clevis bracket MP4 can be combined with clevis bracket MP2.

Materials:

Clevis bracket: Aluminium (no surface treatment)
Bush: Steel and PTFE
Mounting screws acc. to DIN 912: Zinc-plated steel 8.8



Supplied complete with mounting screws for attachment to the cylinder.

According to ISO 15552

| Cyl.-bore | CD | D | E | EW | FL | L | L1 | L4 | MR | TG | XD* | Weight | Order code |
|-----------|------|------|------|------|------|------|------|------|------|------|------|--------|------------------|
| [mm] | [mm] | [mm] | [mm] | [mm] | [mm] | [mm] | [mm] | [mm] | [mm] | [mm] | [mm] | [kg] | |
| Ø32 | 10 | 30 | 47 | 26 | 22 | 12 | 6.5 | 6 | 10.5 | 32.5 | 142 | 0.08 | P1C-4KMEB |
| Ø40 | 12 | 35 | 52 | 28 | 25 | 16 | 5 | 5.5 | 12 | 38 | 160 | 0.11 | P1C-4LMEB |
| Ø50 | 12 | 40 | 65 | 32 | 27 | 16 | 5 | 6.5 | 12 | 46.5 | 170 | 0.18 | P1C-4MMEB |
| Ø63 | 16 | 45 | 78 | 40 | 32 | 21 | 5 | 6.5 | 16 | 56.5 | 190 | 0.28 | P1C-4NMEB |
| Ø80 | 16 | 45 | 95 | 50 | 36 | 22 | 5 | 10 | 16 | 72 | 210 | 0.52 | P1C-4PMEB |
| Ø100 | 20 | 55 | 115 | 60 | 41 | 27 | 5 | 10 | 20 | 89 | 230 | 0.79 | P1C-4QMEB |
| Ø125 | 25 | 60 | 140 | 70 | 50 | 30 | 7 | 10 | 25 | 110 | 275 | 1.46 | P1C-4RMEB |

*Does not apply to cylinders with piston rod extension, lock units and Twin Rods, see page 38.